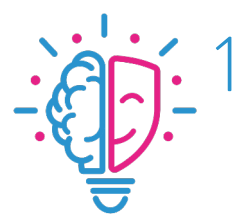


Consolidation Test Question Sheet



ACT RIGHT
THOUGHTFUL THEATRE

1. What is the difference between a learning disability and a learning difficulty?

2. What does it mean if you see someone wearing a green lanyard with sunflowers on it?

3. Sign "Toilet" in BSL. If you aren't taking this test with someone then write a clear description of the sign.

4. Sign "Help". in BSL. If you aren't taking this test with someone then write a clear description of the sign.

5. How can you tell if someone is lip reading? If they are, how can you help them?

6. What are the keys things to do/think about when guiding a blind person?

7. What are the keys things you should tell a blind person when leading them on stairs?

8. How is the best way to take someone to the toilet when guiding them?

Consolidation Test Question Sheet



ACT RIGHT
THOUGHTFUL THEATRE

9. What is the anagram to help you remember what to do when helping someone having a panic attack and what does it stand for?

10. What does "E" in the anxiety anagram remind you to do when someone is having a panic attack?

11. When, whilst witnessing a panic attack, should you call 999?

12. List at least 6 key language communication tactics.

13. What do the following descriptions and uses of guide canes tell you about the user?

Long cane being tapped or rolled in front of the user:

Short cane being held vertically by the user:

Red and white banded cane:

14. What it is important to ask if you are looking after someone guide dog?

Theatres sometimes off the service of watching your guide dog whilst the owner is in the theatre.